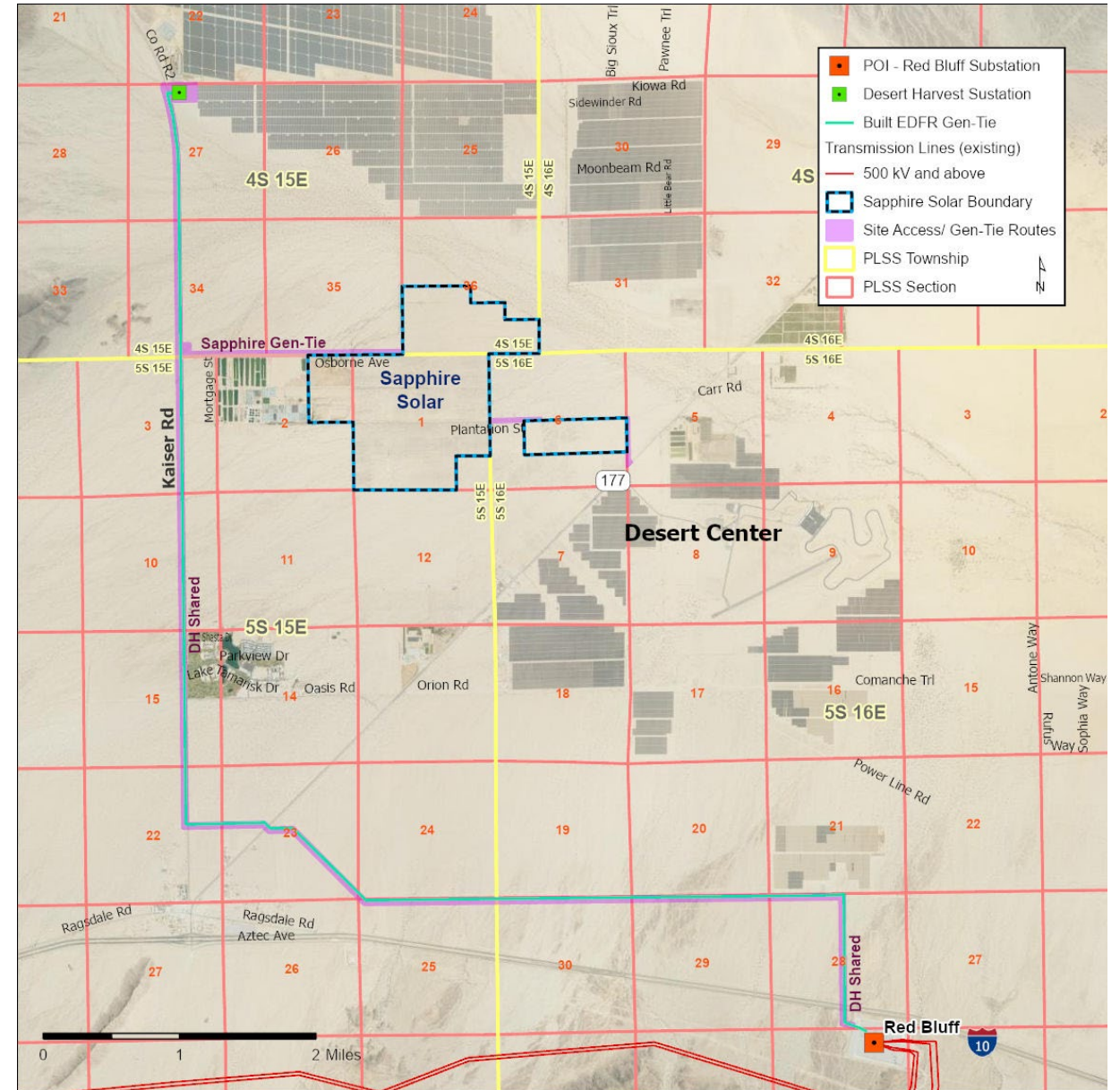


Sapphire Solar PV + Storage updates

- 117MW Solar PV and up to 117 MW BESS
- Located in Riverside County, CA; ~3 miles North of Desert Center
- Includes both BLM and private lands
 - Private Lands = 1,082 acres
 - BLM Lands = 41 acres
 - ★ • BLM lands has been reduced by 69 acres.
 - Total project = 1,123 acres
 - ★ • Reduced total acres from 1,192 acres
- Interconnection position
 - Line Tap on existing transmission line
 - Redbluff 230kV Substation
- Commercial Operation Date (COD)
12/01/2025



Land Fabric

